

The NIH Data Management and Sharing Requirements and the DMPTool



for the Novice (or Non-!) Data Librarian

SLRLN Tech Expo
April 5, 2023
Katy Smith, PhD, MLIS
katy.smith@slu.edu

Objectives

By the end of this presentation, you will:

1. define research data management and sharing plans
2. identify the carrots and sticks of integrating research data management practices with research
3. define the two requirements of the new NIH Data Management and Sharing Policy (effective NOW!)
4. outline the [current!] parameters of the NIH required plan
5. access and utilize a helpful template tool to create your plan

What is a Data Management [& Sharing] Plan?

“Data Management and Sharing Plan: A plan describing the data management, preservation, and sharing of scientific data and accompanying metadata⁶.”

A DMSP basically describes what researchers will do with data **during** the project as well as **after** the project is completed.

⁶United States National Institutes of Health. (2020, October 29). Final NIH policy for data management and sharing. <https://grants.nih.gov/grants/guide/notice-files/NOT-OD-21-013.html>

Why are Data Management & Sharing Important?

- Required for reproducibility
- Facilitates data reuse
- Helps make data *FAIR*





**AND THIS
AFFECTS
ME**

HOW?



VS.



Image from <https://www.ajbsportsineducation.com/wpcontent/uploads/2018/09/Carrotorstick.png>

The Carrots:

A well-managed project outlined by a data management and sharing plan benefits the researcher and can help to make the research more efficient, effective, and impactful by:

- keeping the team organized and on schedule
- helping to prevent data and/or file disorganization, loss, or corruption
- avoiding data duplication
- ensuring that the research meets legal and ethical requirements
- increasing research impact and visibility by facilitating reproducibility and sharing
- saving the researcher time and resources!



<https://www.neogaf.com/threads/vau-lt-boy-and-his-thumbs-up.1121776/>

The Sticks:

- Journals—PLOS, Nature, JDAP Partners
- Funders—NSF, NIH
- Home Institutions...





01/25/2023

NIH DMSP

WINTER IS

HERE!

meme-arsenal.ru

Before we get started...

Purpose

"...reinforces NIH's longstanding commitment to making the results and outputs of NIH-funded research available to the public through effective and efficient data management and data sharing practices."

Scope

"...applies to all research, funded or conducted in whole or in part by NIH, that results in the generation of scientific data...
[it] does not apply to research and other activities that do not generate scientific data, including training, infrastructure development, and non-research activities."

Working Group on NIH DMSP Guidance

Hao Ye, University of Florida

Marla Hertz, University of Alabama
at Birmingham

Kelsey Badger, The Ohio State
University

Lena Bohman, Zucker School of
Medicine at Hofstra/Northwell

Hannah Calkins, Sage Bionetworks

Lucy Carr Jones, University of
Virginia

Nicole Contaxis, New York University
Langone & the National Center for
Data Service

Andrea Denton, University of Virginia

Nina Exner, Virginia Commonwealth
University

Lisa Federer, National
Library of Medicine

Shannon Farrell, University
of Minnesota

Tess Grynock, University of
Massachusetts

Barrie Hayes, University of
North Carolina at Chapel
Hill

Amy Koshoffer, University of
Cincinnati

Raisa Ionin, NIH Library

Seonyoung Kim, Washington
University in St. Louis

Dani LaPreze, University of
Louisville

Alex May, Oak Ridge
National Laboratory

Jenny Muilenburg, University
of Washington

Jess Newman McDonald,
University of Tennessee

Christine Nieman, University of
Maryland Baltimore, NNLM
Region 1

Reid Otsuji, University of
California, San Diego

Daria Orłowska, Western
Michigan University

Lauren Phegley, University of
Pennsylvania

Melissa Ratajeski, University
of Pittsburgh

Debra Rand, Zucker School of
Medicine at Hofstra/Northwell

Rebecca Renirie, Central
Michigan University

Lauren Robinson, University of
Kentucky Medical Center
Library,

Kerry Sewell, East Carolina
University

Collin Schwantes, EcoHealth
Alliance

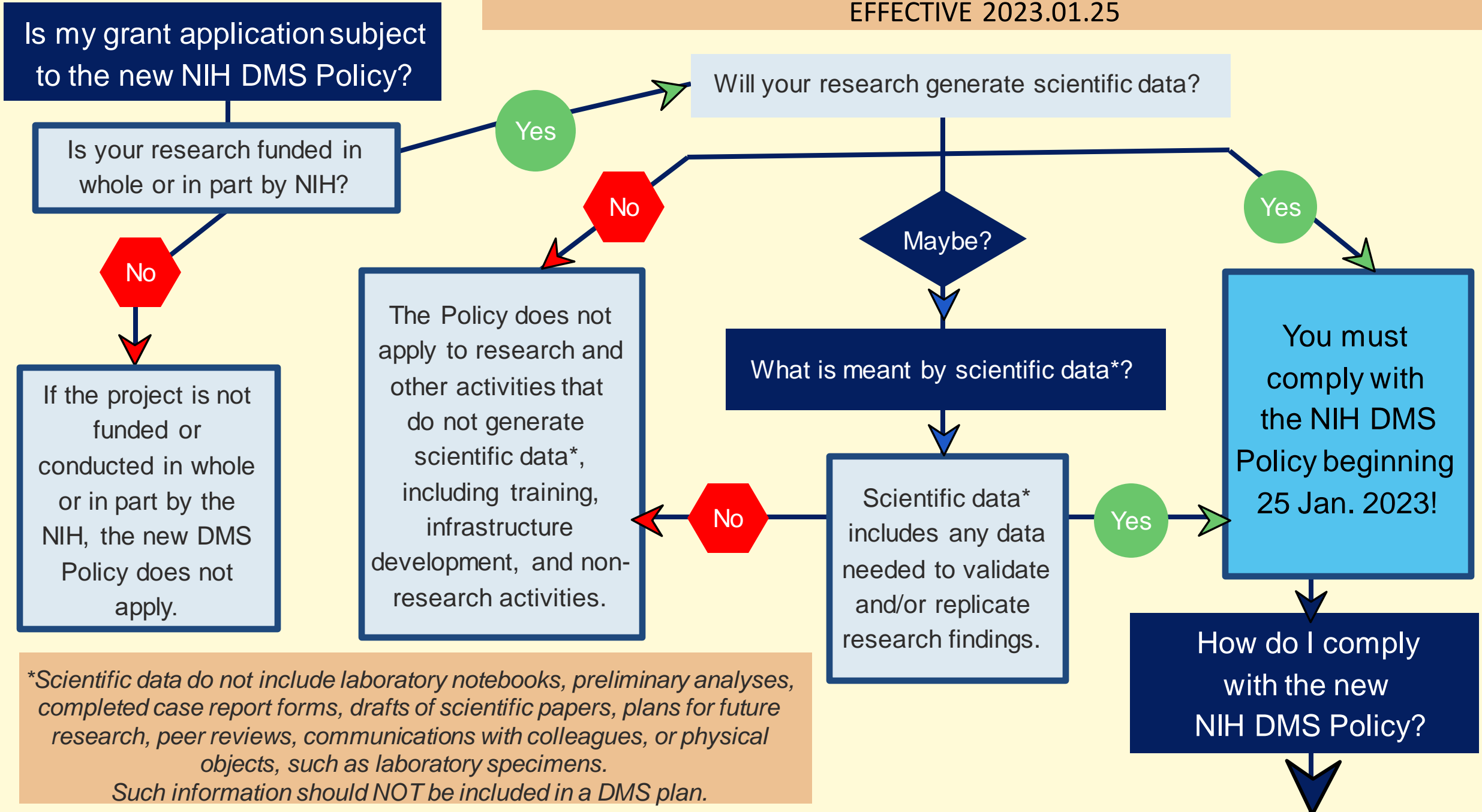
Cynthia Sheffield, NIH Library

Katy Smith, Saint Louis
University

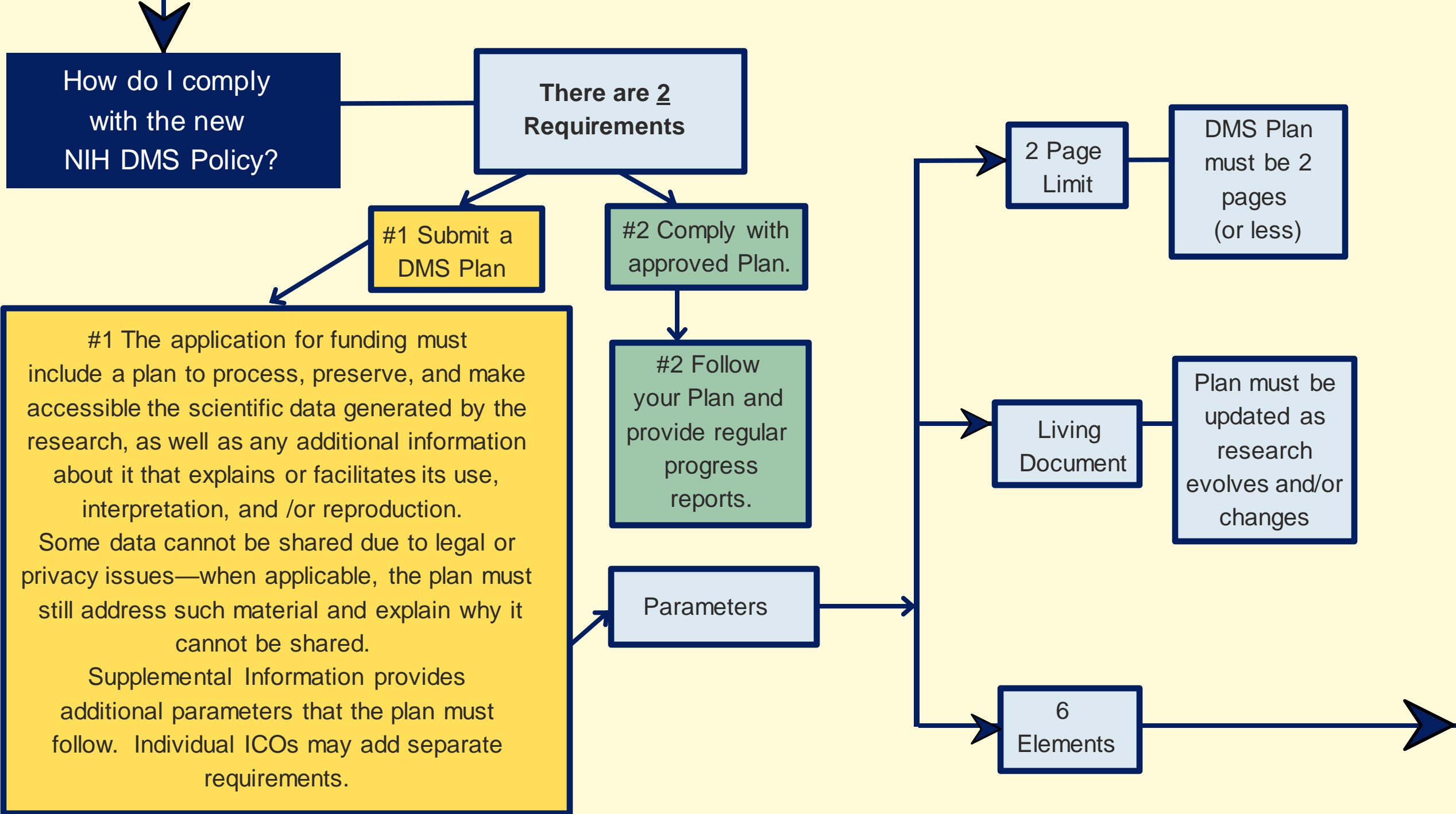
Ummea Urmi, New York
University Langone Health

<https://osf.io/uadxr/>

GENERALIZED OVERVIEW OF THE NIH DATA MANAGEMENT AND SHARING POLICY
EFFECTIVE 2023.01.25



**Scientific data do not include laboratory notebooks, preliminary analyses, completed case report forms, drafts of scientific papers, plans for future research, peer reviews, communications with colleagues, or physical objects, such as laboratory specimens. Such information should NOT be included in a DMS plan.*



How do I comply with the new NIH DMS Policy?

There are 2 Requirements

#1 Submit a DMS Plan

#2 Comply with approved Plan.

#1 The application for funding must include a plan to process, preserve, and make accessible the scientific data generated by the research, as well as any additional information about it that explains or facilitates its use, interpretation, and /or reproduction. Some data cannot be shared due to legal or privacy issues—when applicable, the plan must still address such material and explain why it cannot be shared. Supplemental Information provides additional parameters that the plan must follow. Individual ICOs may add separate requirements.

Parameters

#2 Follow your Plan and provide regular progress reports.

2 Page Limit

DMS Plan must be 2 pages (or less)

Living Document

Plan must be updated as research evolves and/or changes

6 Elements

6 Elements

HINT:
use the DMPTool
templates for the
plan and all six
elements!

Need Assistance?
Contact the Librarians

View the Data Management Guide

Access the DMPTool Guide

Data Type

What data/metadata will be generated; how will it be processed, managed, preserved, and shared? Will any data not be shared? Why?

Related Tools, Software, and/or Code

What tools/software are needed to support reproducibility? How can they be accessed? How long will they be available?

Standards

What standards will be applied to data/associated metadata? If no discipline consensus data standards exist, consider committing to general or interdisciplinary standards or simply state that no consensus data standards exist.

Data Preservation, Access and Associated Timelines

- What repository will be used?
- How will data be findable/identifiable?
- When will what be made available and for how long?

NOTE: NIH requires data be shared as soon as possible: no later than time of publication or end of grant period, whichever comes first.

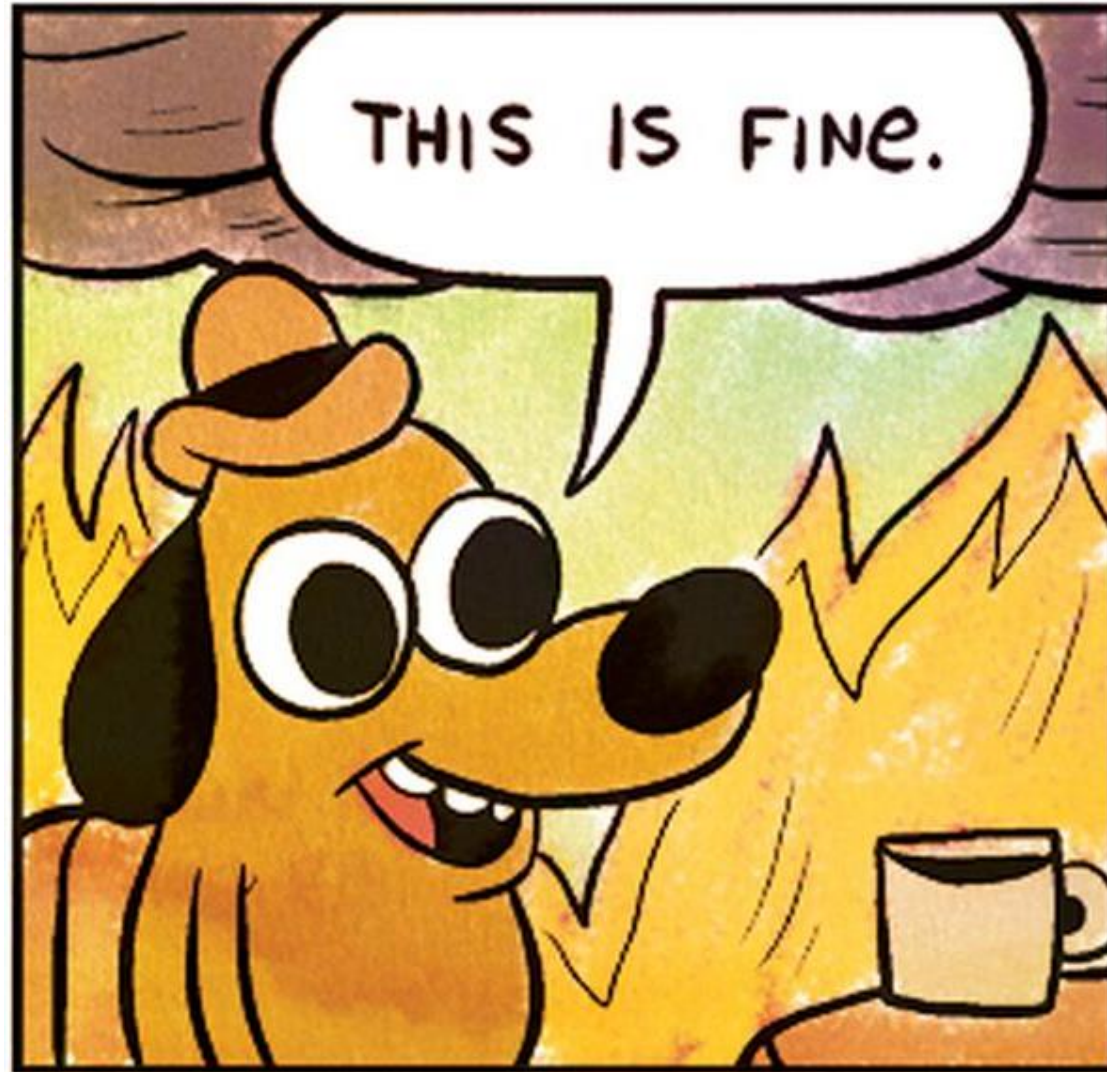
Access, Distribution, or Reuse Considerations

Are there any limitations or restrictions to data sharing?

Oversight of Data Management and Sharing

How will the Plan be monitored and by whom?





<https://www.theverge.com/2016/5/5/11592622/this-is-fine-meme-comic>

DMPTool NIH Working Group



“...working group consisting of data librarians from across the US. The main focus of this WG is to build and update the NIH DMSP templates. Additional work is being done by an education sub-committee that is producing associated educational resources.”

Swim downstream with the



DMPTool

Build your Data Management Plan



**I DIDN'T ALWAYS WRITE DATA
MANAGEMENT & SHARING PLANS**

**BUT NOW THAT I KNOW
BETTER (and it's required!)
I USE DMPTool!**

The DMPTool!

- Includes customized templates that comply with funder mandates.
- Leads you through writing your plan by breaking it down by the NIH required elements.
- Provides links to useful guidance from NIH, suggested responses, and additional resources.
- **Is Free!**

Let's Check it Out! <https://dmptool.org/>

Objectives

By the end of this presentation, you now can:

1. define research data management and sharing plans
2. identify the carrots and sticks of integrating research data management practices with research
3. define the two requirements of the new NIH Data Management and Sharing Policy (effective NOW!)
4. outline the [current!] parameters of the NIH required plan
5. access and utilize a helpful template tool to create your plan

Objectives

By the end of this presentation, you can:

hold your head high and confidently converse with PIs, data scientists, and data sciences librarians because you know just about as much about how to comply with the NIH Data Management and Sharing Policy as well as what effects it will have as they do!

Thank you!
Questions?

katy.smith@slu.edu

